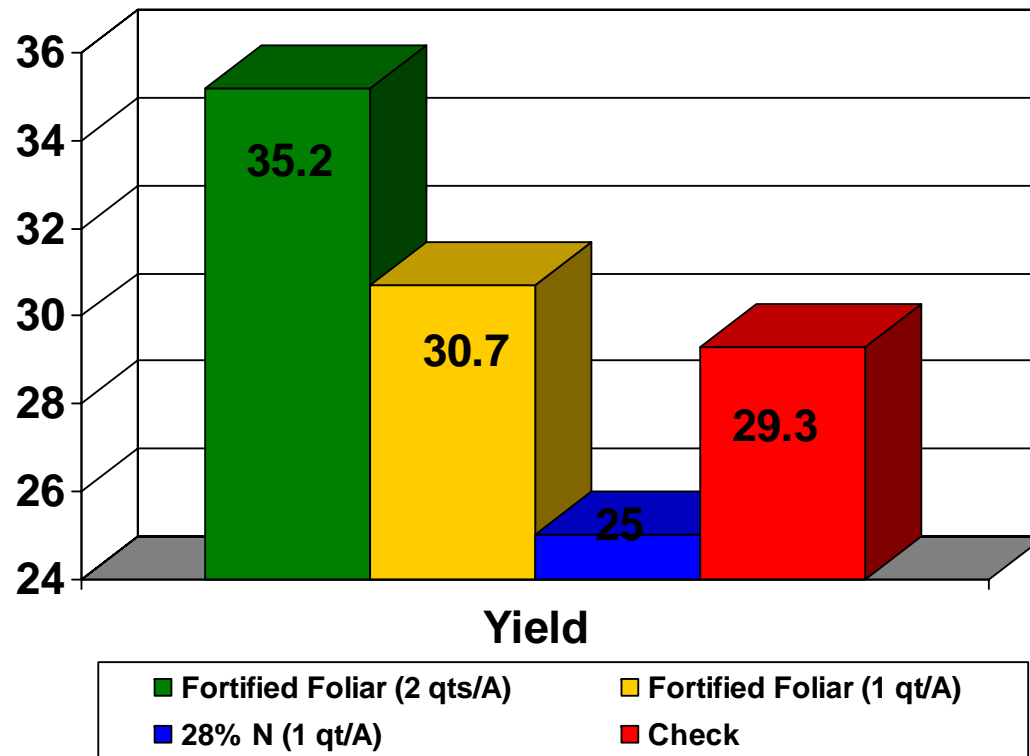


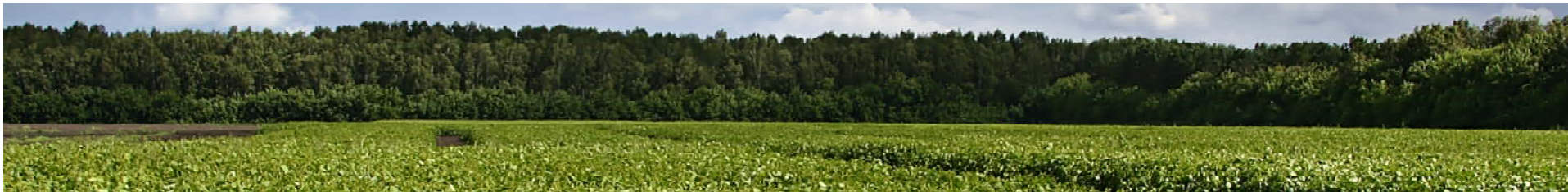
Fortified Foliar Research

Conducted by: Gordon Scheifele Farview Research



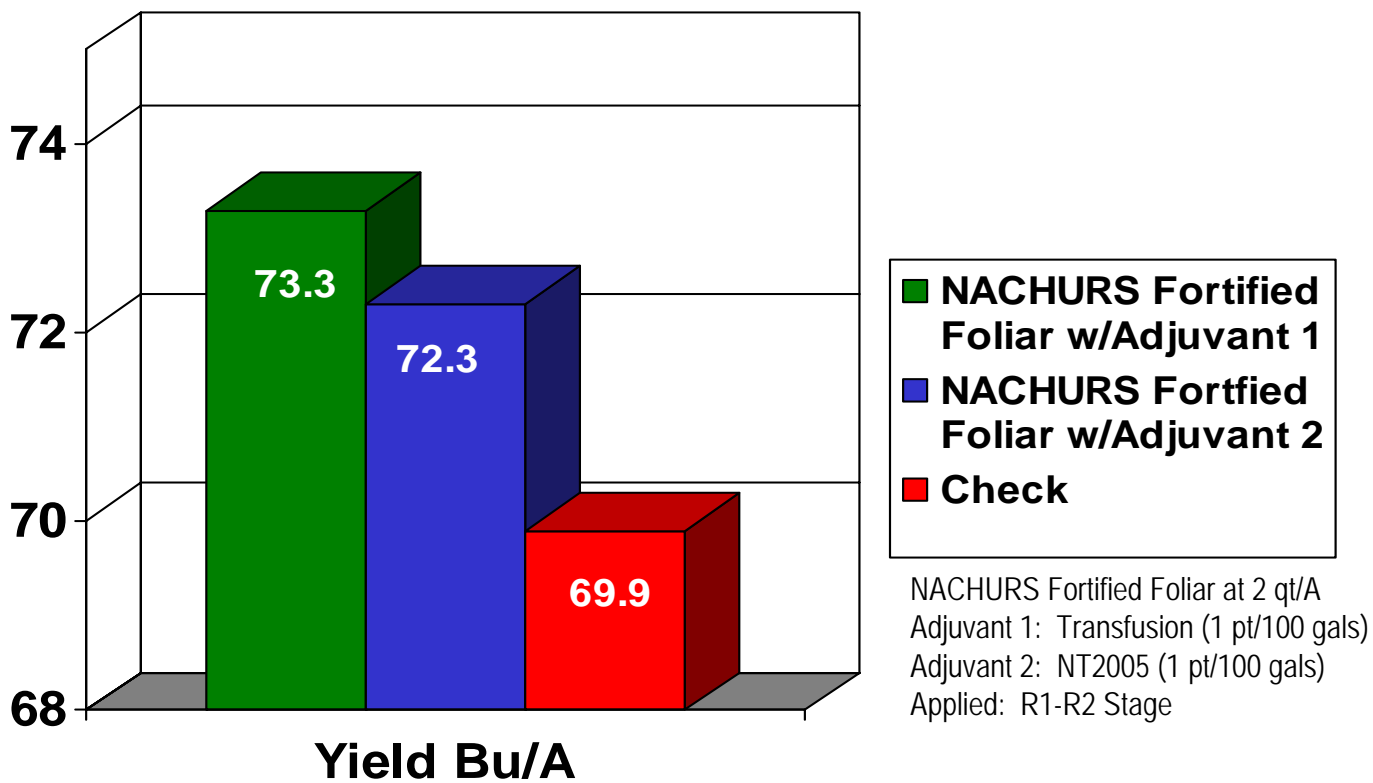
Fortified Foliar Advantage: +1.4 to +10.20 Bu/A





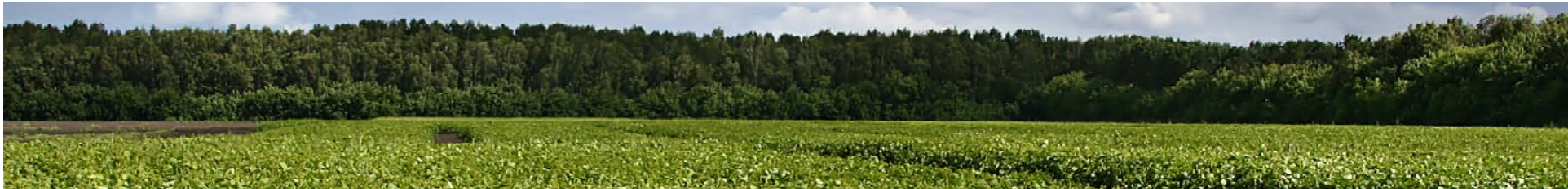
2005 Fortified Foliar

Soybean Plot #1, Poseyville, IN



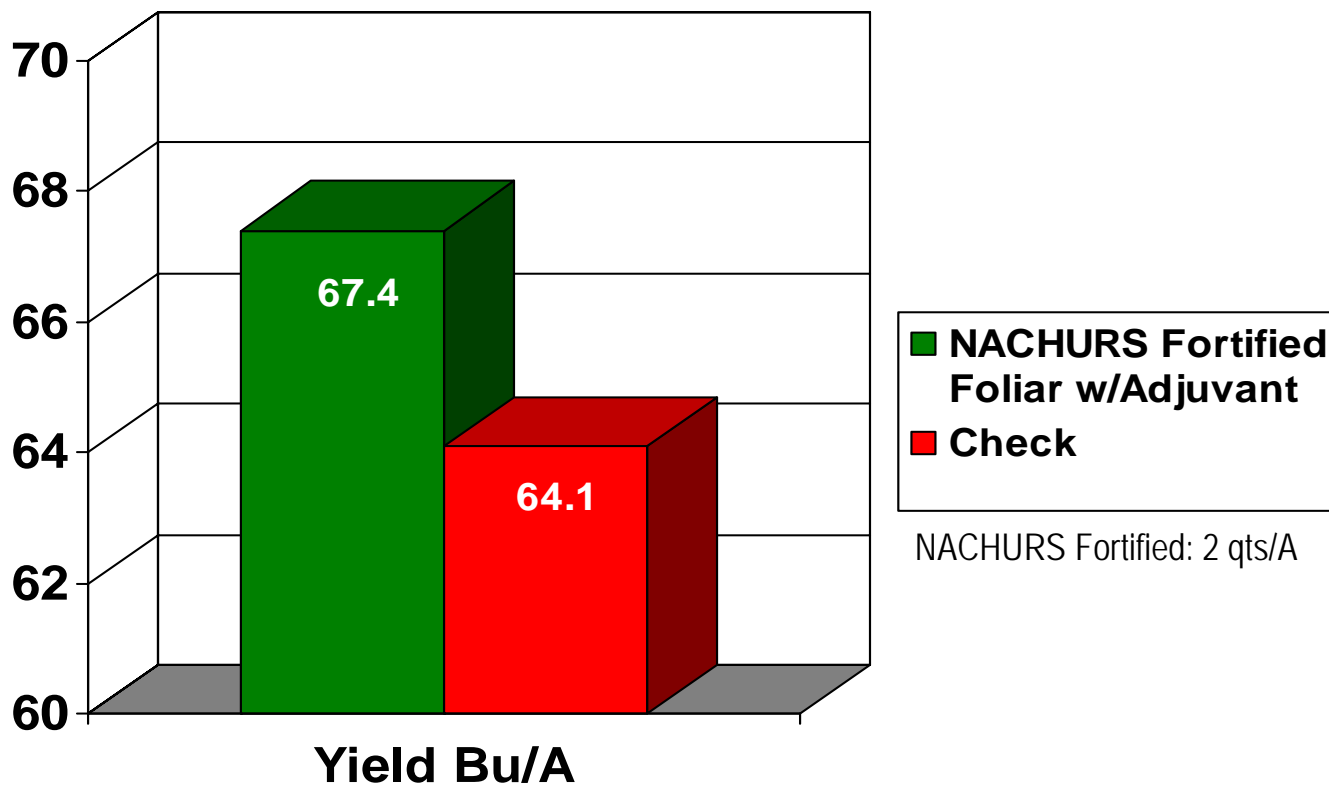
Fortified Foliar Advantage: +2.4 – 3.4 Bu/A





2005 Fortified Foliar

Soybean Plot #1, Mayfield KY



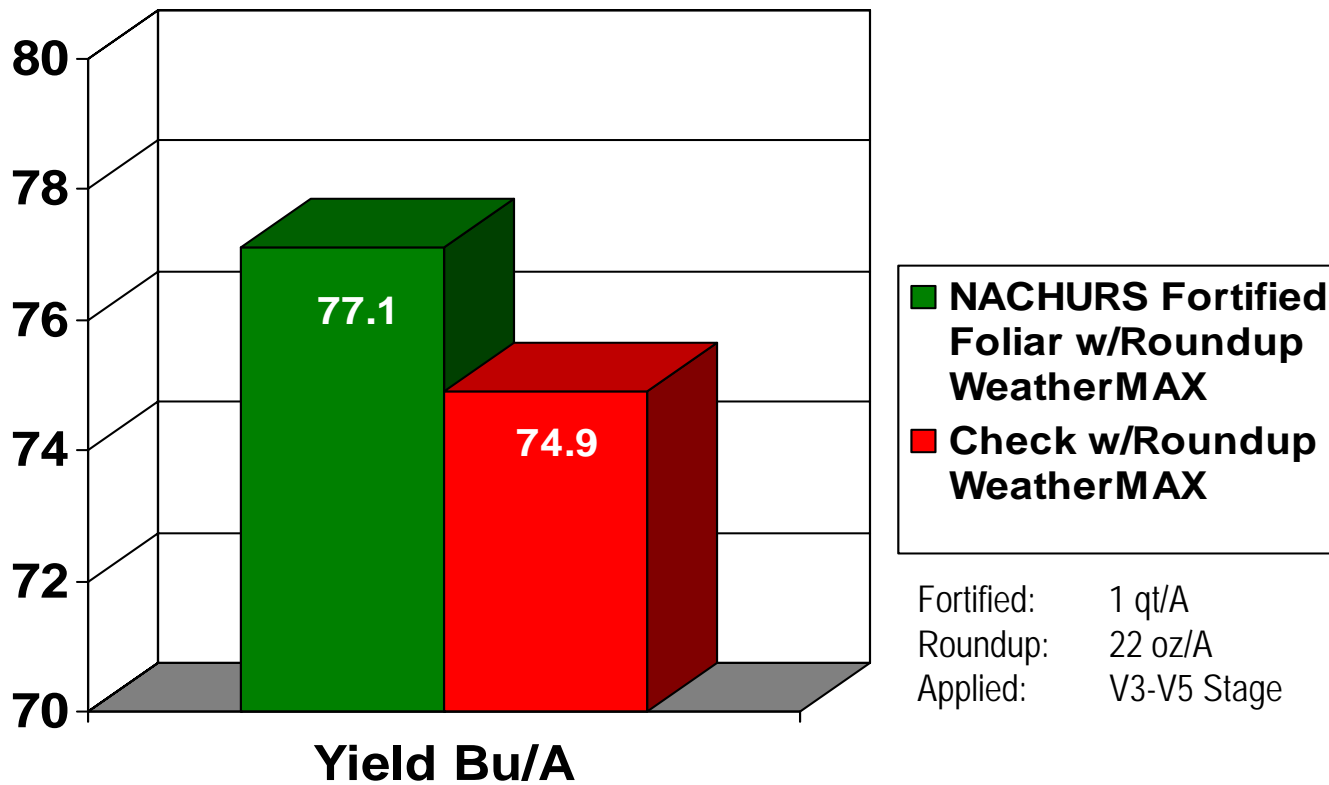
Fortified Foliar Advantage: +3.3 Bu/A





2005 Fortified Foliar

Soybean Plot #2, Owensboro, KY



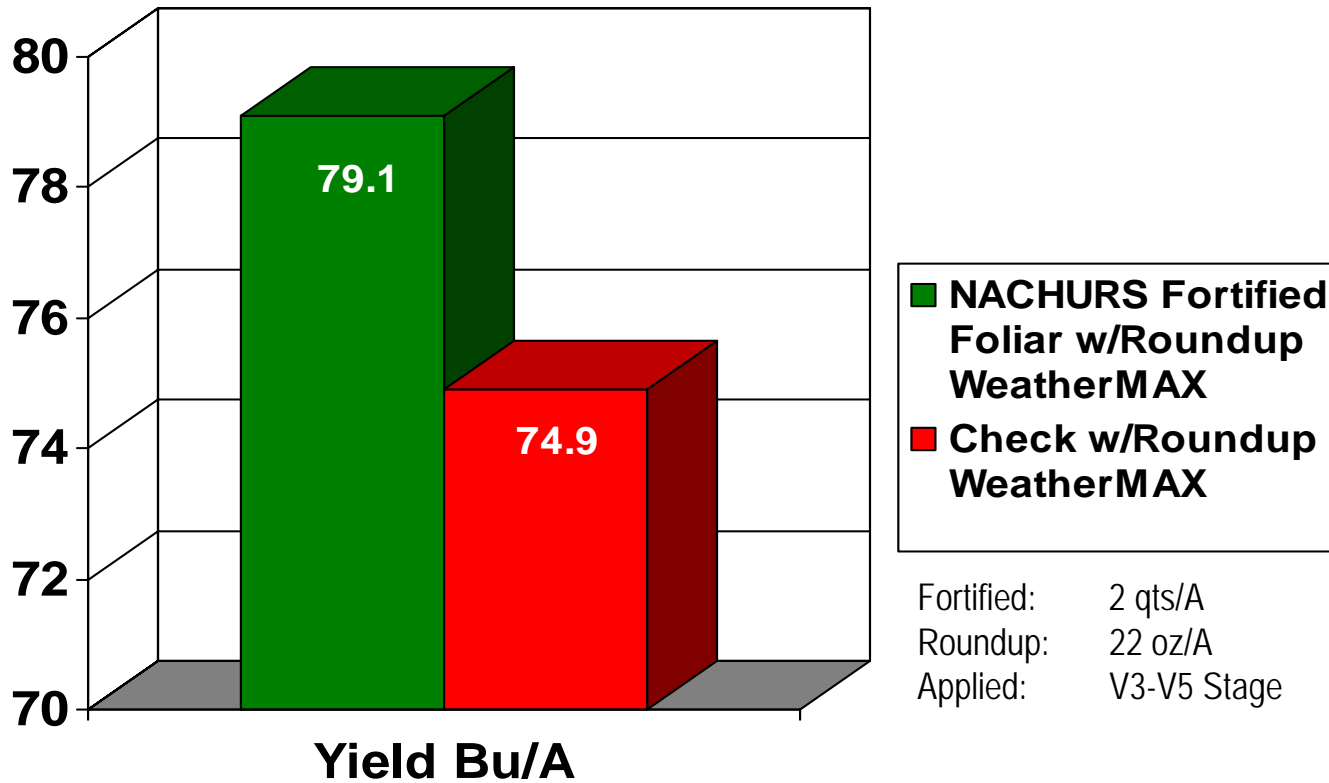
Fortified Foliar Advantage: +2.2 Bu/A





2005 Fortified Foliar

Soybean Plot #3, Owensboro, KY



Fortified Foliar Advantage: +4.2 Bu/A

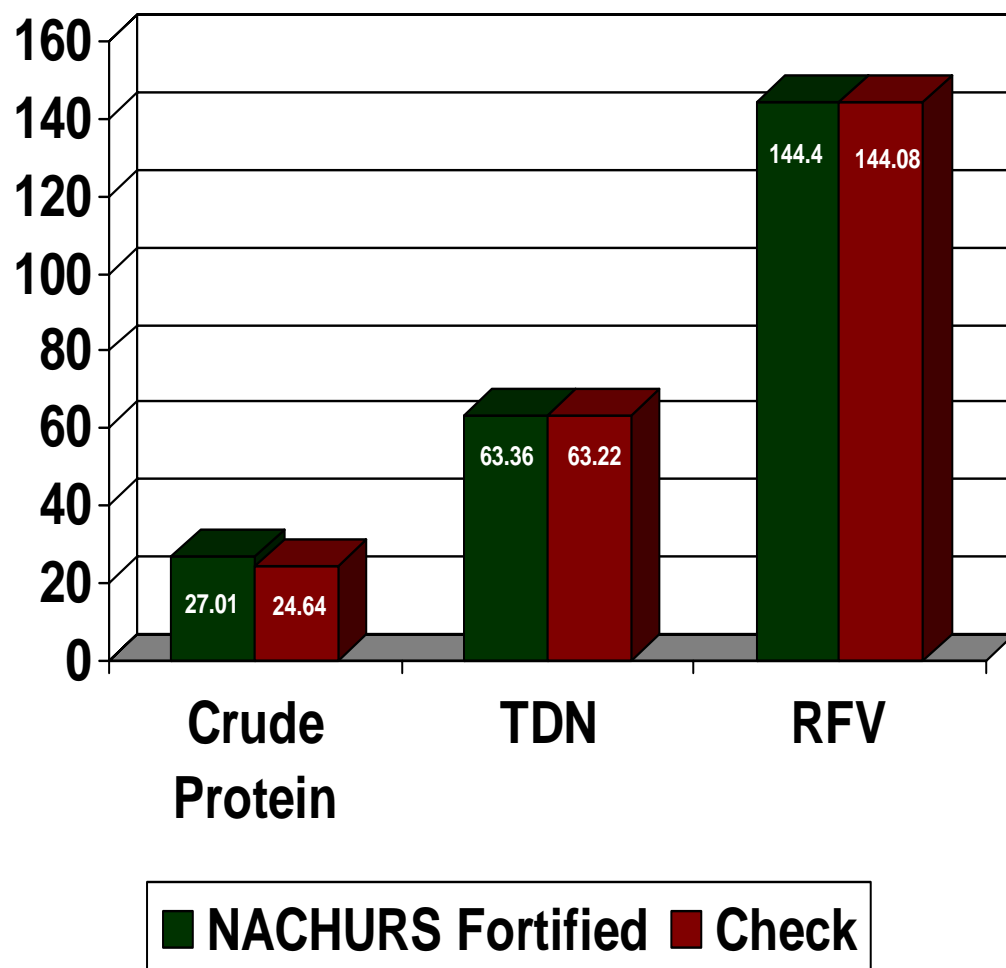




2005 Fortified Lab Analysis

Dairyland Laboratories, Inc., WI

Amount In Percent



Fortified Advantage:

CP: +2.37%

TDN: +.11%

RFV: +.32%

Sampled by: Feed Country LLC

Sampled For: Ag Tech West

Date: 8/12/2005



NACHURS®



Alfalfa Fortified Foliar Research

Plot Information:

Cutting Info:
 First cutting: June 12
 Second cutting: July 23 at 50% bloom
 Third Cutting: September 13

Application Info:
 1st application applied June 18
 2nd application applied July 29 on stubble

Plot Info: Plots were swathed with 9' haybine, hand-raked and hand weighed.

- Harvested four 9' x 10' plots per treatment
- Results were averaged of 4 plots
- Check is averaged on two strips, one on either side of trial
- Sample from each treatment were analyzed for feed quality by Stratford Agri Analysis Lab
- Sample from Treatments 1 & 3 in 3rd cutting for feed quality were analyzed by Stratford Agri Analysis Lab

Results:

2nd Cutting Dry Matter (DM) Basis:

	Check	Fortified (1 qt/A)	Fortified (2 qts/A)
Yield	9,733 Lbs.	10,834 Lbs.	12,741 Lbs.
Dry Matter	2278 Lbs.	2,687 Lbs.	2,905 Lbs.
Crude Protein	460 Lbs.	553 Lbs.	558 Lbs.

3rd Cutting Dry Matter (DM) Basis:

	Check	Fortified (1 qt/A)	Fortified (2 qts/A)
Yield	9,544 Lbs.	9,663 Lbs.	10,020 Lbs.
Dry Matter	1,966 Lbs.	1,991 Lbs.	2,185 Lbs.
Crude Protein	383 Lbs.	Not Evaluated	433 Lbs.

