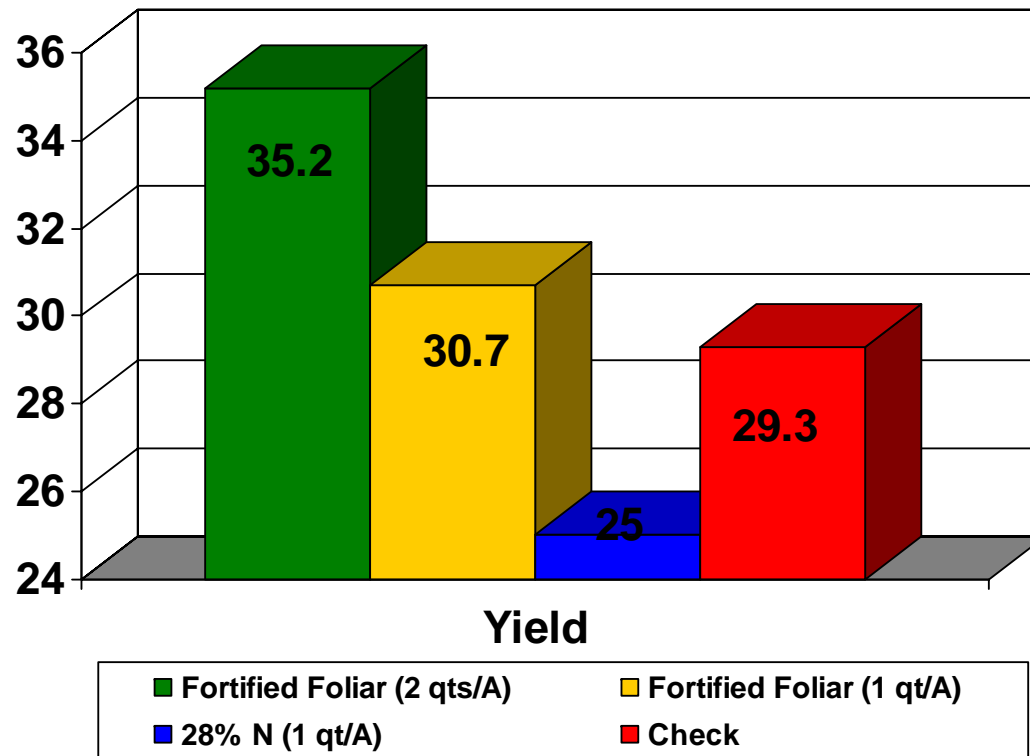




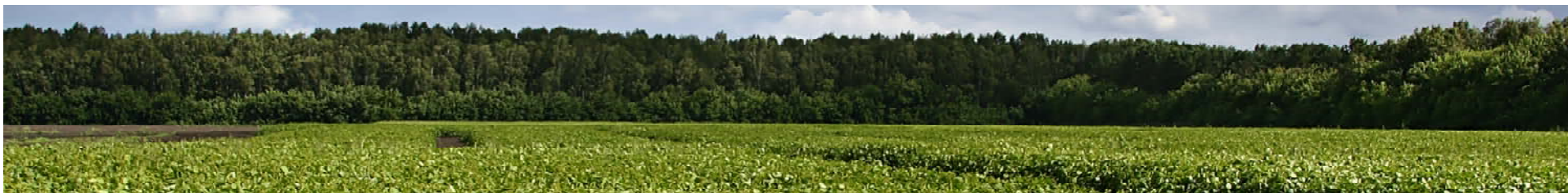
Fortified Foliar Research

Conducted by: Gordon Scheifele Farview Research



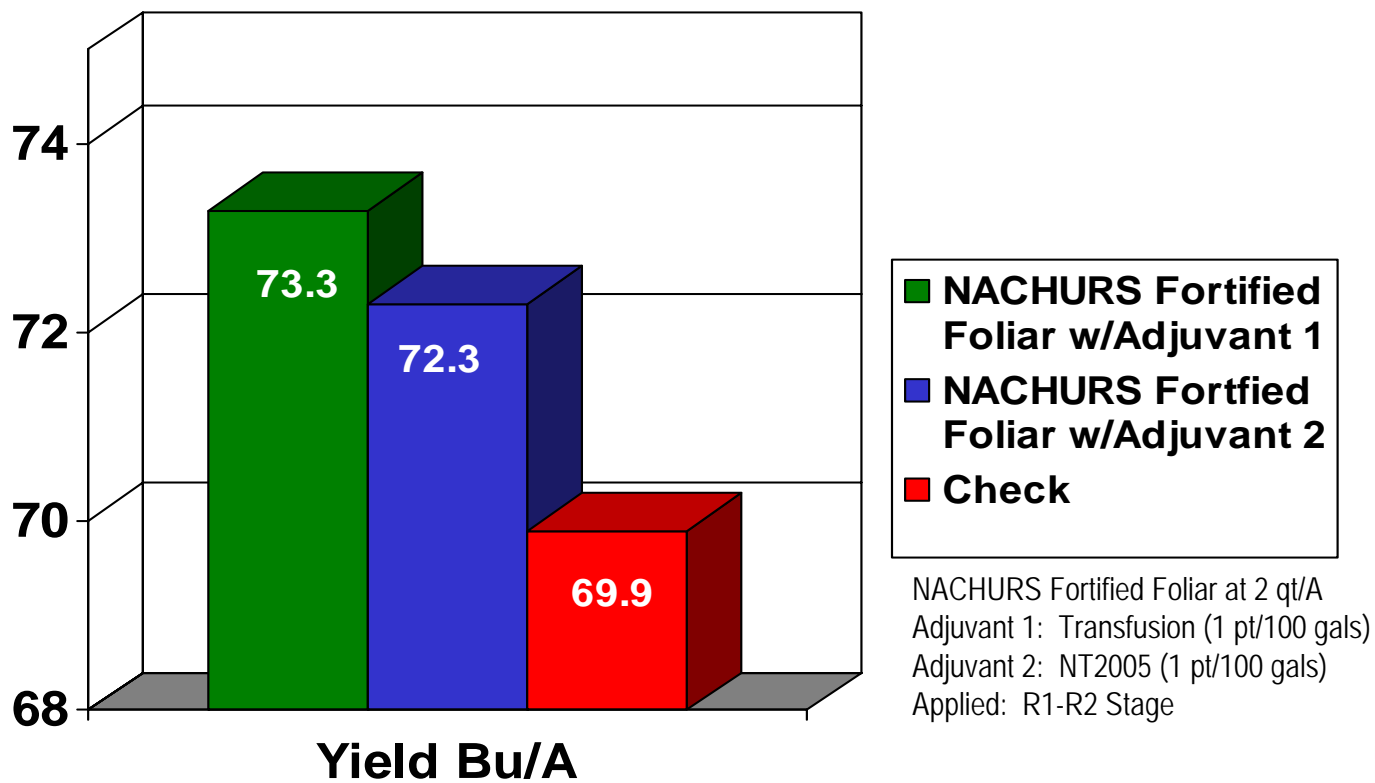
Fortified Foliar Advantage: +1.4 to +10.20 Bu/A





2005 Fortified Foliar

Soybean Plot #1, Poseyville, IN



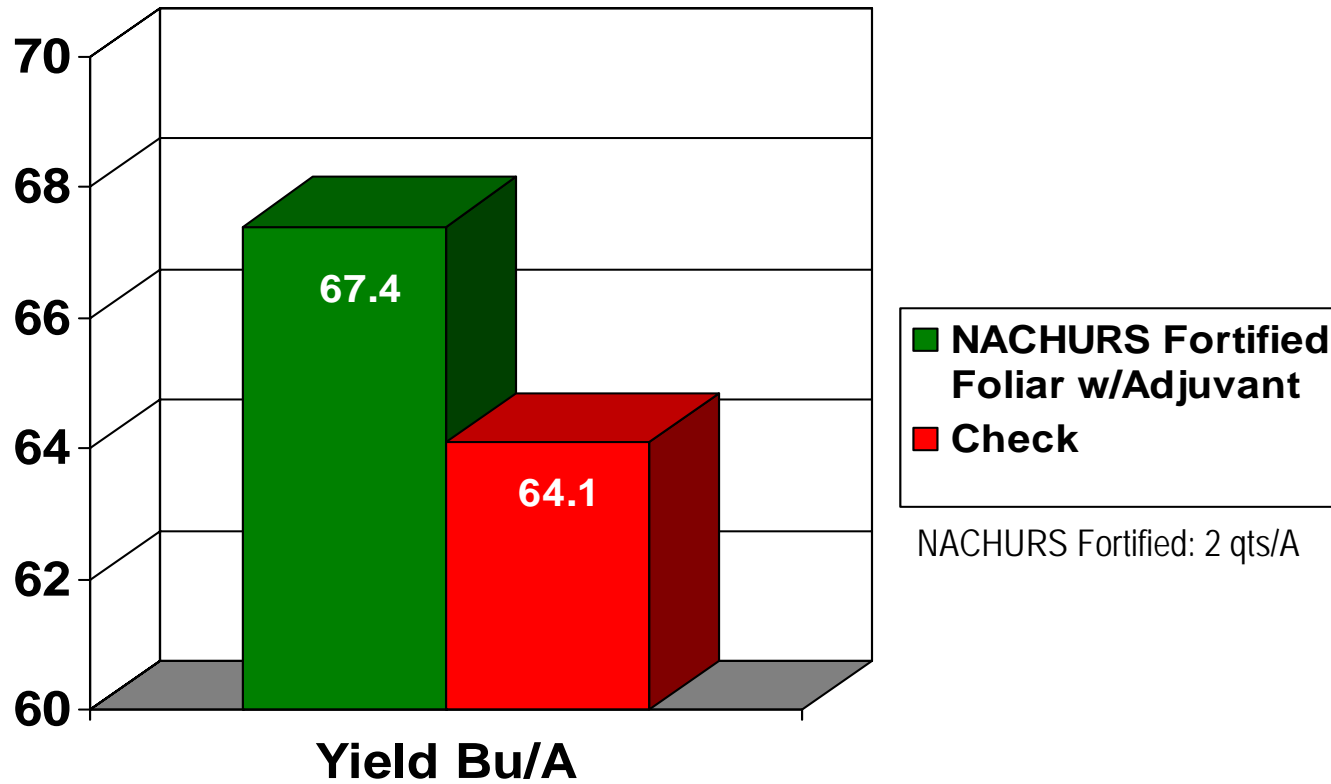
Fortified Foliar Advantage: +2.4 – 3.4 Bu/A





2005 Fortified Foliar

Soybean Plot #1, Mayfield KY



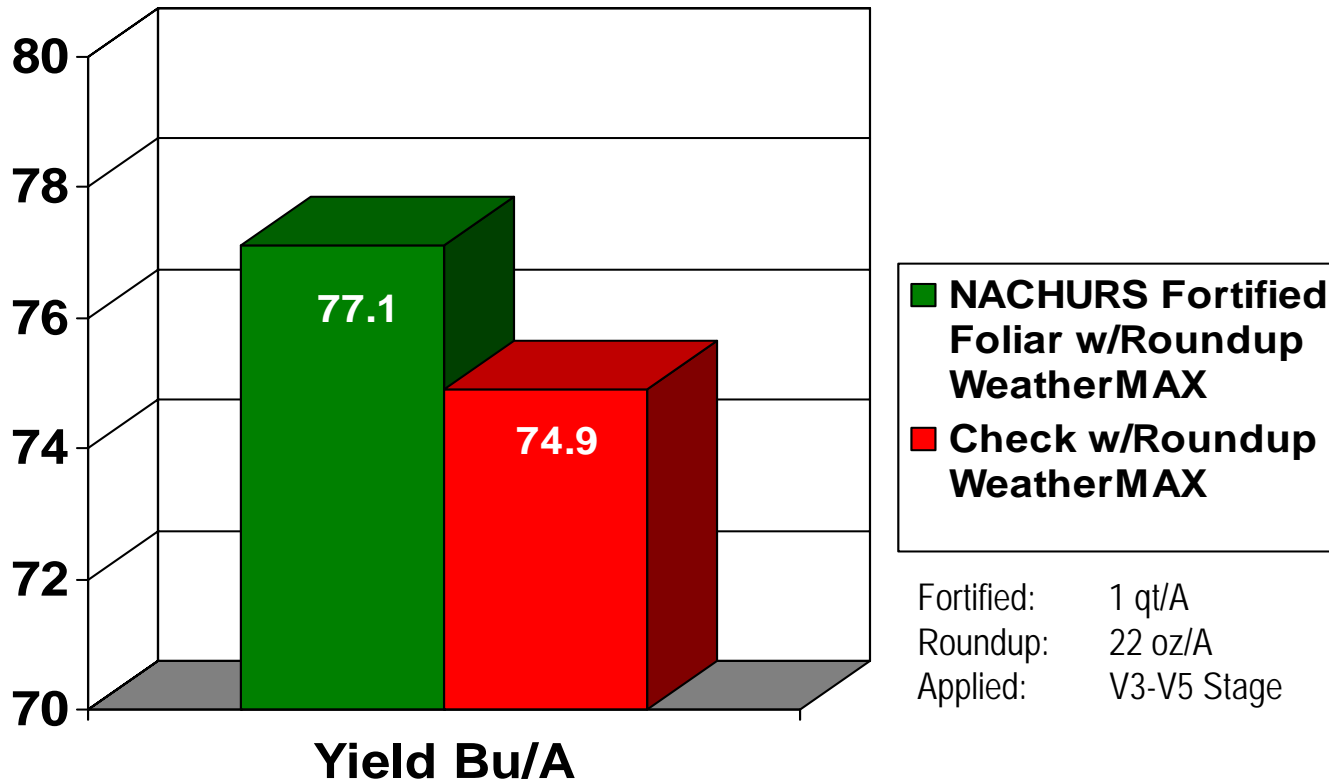
Fortified Foliar Advantage: +3.3 Bu/A





2005 Fortified Foliar

Soybean Plot #2, Owensboro, KY



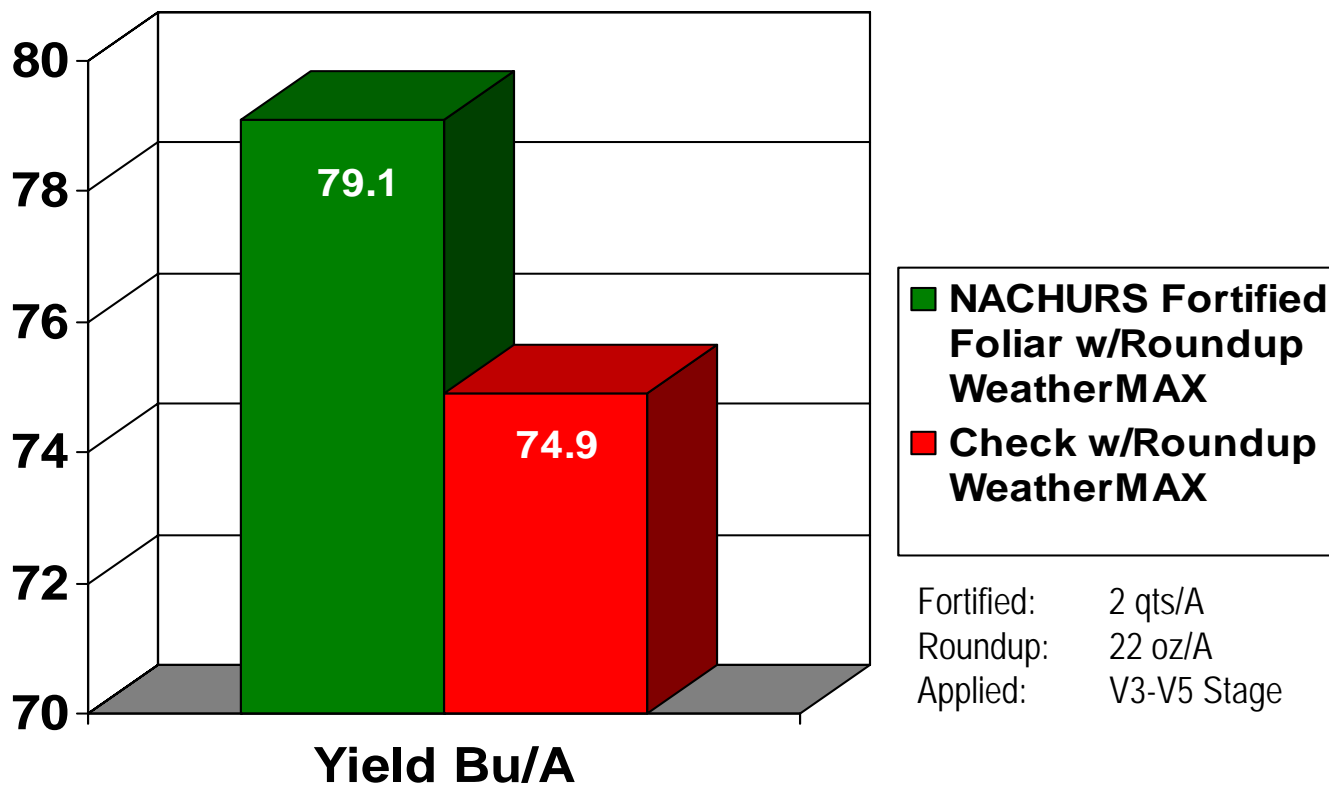
Fortified Foliar Advantage: +2.2 Bu/A





2005 Fortified Foliar

Soybean Plot #3, Owensboro, KY



Fortified Foliar Advantage: +4.2 Bu/A

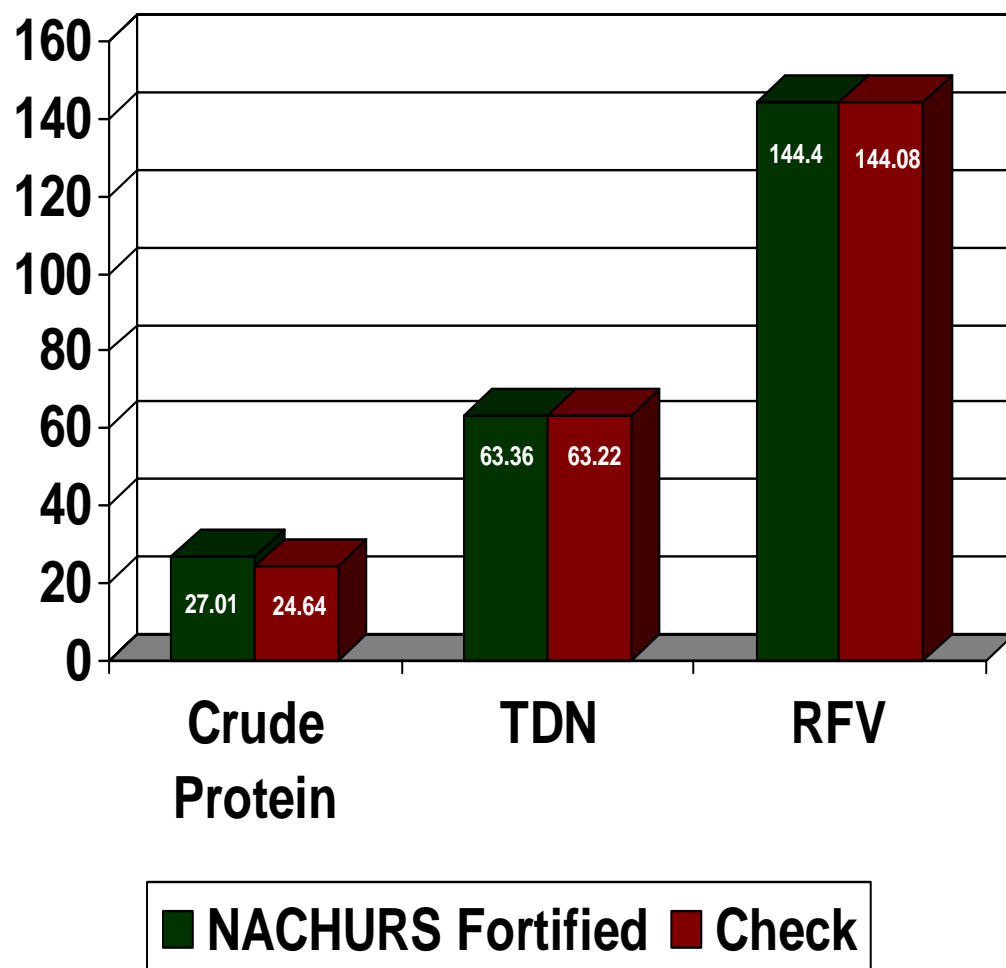




2005 Fortified Lab Analysis

Dairyland Laboratories, Inc., WI

Amount In Percent



Fortified Advantage:

CP: +2.37%

TDN: +.11%

RFV: +.32%

Sampled by: Feed Country LLC

Sampled For: Ag Tech West

Date: 8/12/2005



NACHURS[®]

